

**FIBB Antibody (C-term)**  
**Purified Rabbit Polyclonal Antibody (Pab)**  
**Catalog # AP6517b****Specification**

---

**FIBB Antibody (C-term) - Product Information**

Application	IHC-P, WB,E
Primary Accession	<a href="#">P02675</a>
Other Accession	<a href="#">P14480</a> , <a href="#">Q8K0E8</a>
Reactivity	Human, Mouse
Predicted	Rat
Host	Rabbit
Clonality	Polyclonal
Isotype	Rabbit IgG
Calculated MW	55928
Antigen Region	330-357

**FIBB Antibody (C-term) - Additional Information****Gene ID** 2244**Other Names**

Fibrinogen beta chain, Fibrinopeptide B, Fibrinogen beta chain, FGB

**Target/Specificity**

This FIBB antibody is generated from rabbits immunized with a KLH conjugated synthetic peptide between 330-357 amino acids from the C-terminal region of human FIBB.

**Dilution**

IHC-P~~1:10~50

WB~~1:1000

E~~Use at an assay dependent concentration.

**Format**

Purified polyclonal antibody supplied in PBS with 0.09% (W/V) sodium azide. This antibody is prepared by Saturated Ammonium Sulfate (SAS) precipitation followed by dialysis against PBS.

**Storage**

Maintain refrigerated at 2-8°C for up to 2 weeks. For long term storage store at -20°C in small aliquots to prevent freeze-thaw cycles.

**Precautions**

FIBB Antibody (C-term) is for research use only and not for use in diagnostic or therapeutic procedures.

**FIBB Antibody (C-term) - Protein Information****Name** FGB

**Function** Cleaved by the protease thrombin to yield monomers which, together with fibrinogen alpha (FGA) and fibrinogen gamma (FGG), polymerize to form an insoluble fibrin matrix. Fibrin has a major function in hemostasis as one of the primary components of blood clots. In addition, functions during the early stages of wound repair to stabilize the lesion and guide cell migration during re-epithelialization. Was originally thought to be essential for platelet aggregation, based on in vitro studies using anticoagulated blood. However subsequent studies have shown that it is not absolutely required for thrombus formation in vivo. Enhances expression of SELP in activated platelets. Maternal fibrinogen is essential for successful pregnancy. Fibrin deposition is also associated with infection, where it protects against IFNG-mediated hemorrhage. May also facilitate the antibacterial immune response via both innate and T-cell mediated pathways.

**Cellular Location**

Secreted

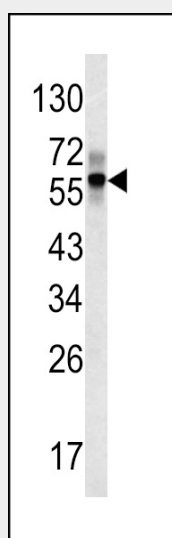
**Tissue Location**

Detected in blood plasma (at protein level).

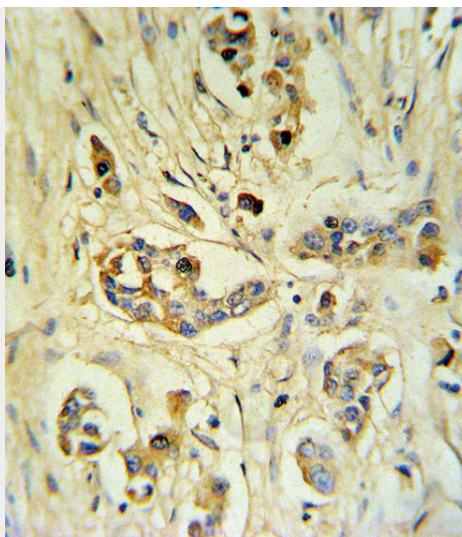
**FIBB Antibody (C-term) - Protocols**

Provided below are standard protocols that you may find useful for product applications.

- [Western Blot](#)
- [Blocking Peptides](#)
- [Dot Blot](#)
- [Immunohistochemistry](#)
- [Immunofluorescence](#)
- [Immunoprecipitation](#)
- [Flow Cytometry](#)
- [Cell Culture](#)

**FIBB Antibody (C-term) - Images**

Western blot analysis of FIBB antibody (C-term) (Cat.# AP6517b) in mouse liver tissue lysates (35ug/lane). FIBB (arrow) was detected using the purified Pab.



FIBB Antibody (C-term) (Cat.# AP6517b) IHC analysis in formalin fixed and paraffin embedded human breast carcinoma followed by peroxidase conjugation of the secondary antibody and DAB staining. This data demonstrates the use of the FIBB Antibody (C-term) for immunohistochemistry. Clinical relevance has not been evaluated.

#### **FIBB Antibody (C-term) - Background**

FIBB is the beta component of fibrinogen, a blood-borne glycoprotein comprised of three pairs of nonidentical polypeptide chains. Following vascular injury, fibrinogen is cleaved by thrombin to form fibrin which is the most abundant component of blood clots. In addition, various cleavage products of fibrinogen and fibrin regulate cell adhesion and spreading, display vasoconstrictor and chemotactic activities, and are mitogens for several cell types. Mutations in its gene lead to several disorders, including afibrinogenemia, dysfibrinogenemia, hypodysfibrinogenemia and thrombotic tendency.

#### **FIBB Antibody (C-term) - References**

Sun,A., Acta Cardiol 64 (3), 357-361 (2009)  
Guo,X., Neurol. Res. 31 (4), 381-384 (2009)